

# ***Software Manual***

## ***for macOS***

### ***Supported Models***

- ❑ ***TSP100 Series***
- ❑ ***TSP650II Series***
- ❑ ***TSP700II Series***
- ❑ ***TSP800II Series***
- ❑ ***mPOP Series***
- ❑ ***mC-Print3 Series***
- ❑ ***mC-Print2 Series***

**Notice:**

- Bluetooth® wordmark and logo are registered trademarks owned by Bluetooth SIG, Inc.
- macOS, Mac, OS X, Mac mini, iMac are trademarks of Apple Inc., registered in the U.S. and other countries.
- The information in this manual is subject to change without notice.
- STAR MICRONICS CO., LTD. has taken every measure to provide accurate information, but assumes no liability for errors or omissions.
- STAR MICRONICS CO., LTD. is not liable for any damages resulting from the use of information contained in this manual.
- Reproduction in whole or in part is prohibited.

# Table of Contents

<b>1. Installation/Uninstallation Procedures .....</b>	<b>5</b>
1.1 Installing Star CUPS Drivers.....	5
1.2 Registering the Printer .....	9
1.3 Uninstalling Star CUPS Drivers .....	17
<b>2. Setting Printer Functions.....</b>	<b>20</b>
2.1 Function List .....	21
2.2 Star Micronics Cloud .....	27
<b>3. Setting the Paper Size .....</b>	<b>30</b>
3.1 Setting the Paper Size.....	30
3.2 Settable Paper Sizes .....	31
<b>4. Guidelines for Using an Ethernet Environment .....</b>	<b>32</b>
4.1 Setting a Temporary IP Address.....	32
4.2 Setting the IP Address << StarPrinter TELNET Utility >> .....	34
<b>5. Guidelines for Using the lpr Command .....</b>	<b>37</b>
5.1 Function List .....	38
<b>6. Confirmed Operating Environments .....</b>	<b>40</b>
<b>7. Revision History .....</b>	<b>41</b>

## Introduction

This manual describes the setup procedures and the functional outline of the Star CUPS driver which use TSP100 series, TSP650II series, TSP700II series, TSP800II series, mPOP series, mC-Print3 series and mC-Print2 series.

The printer's IP address must be set in advance to use a printer that supports LAN using this driver. If your LAN environment does not allow acquisition of an IP address from a DHCP server, set the IP address to the printer in advance. See 4. Guidelines for Using an Ethernet Environment for details on how to set the IP address for the printer.

### Limitation for TSP100LAN:

Cannot print files with the names are over 80 characters.

## Operating Environment

### Operating System

- ◆ macOS 10.13
- ◆ macOS 10.12
- ◆ Mac OS X 10.11
- ◆ Mac OS X 10.10 <sup>\*1</sup>

### Limitations for Bluetooth models

The maximum page length printable by Bluetooth printers is 1500 mm.

#### <sup>\*1</sup> Limitations for Mac OS X 10.10 (USB models)

If a USB printer is used with Mac OS X10.9.4 - 10.10, the printer queue is sometimes displayed as Off-line even though the printer can print when powering off the printer or restarting the PC. It can be prevented by allocating a USB serial number.

Please use the "USB serial number allocation script" enclosed in the package to allocate a USB serial number to the printer. Please see the manual attached to the "USB serial number allocation script" for details.

# 1. Installation/Uninstallation Procedures

## **Cautions :**

- The account with administrative privilege for the PC should install/uninstall this driver.
- You will need to restart your computer when the installation has finished. Please close all running applications before starting the installation.

## 1.1 Installing Star CUPS Drivers

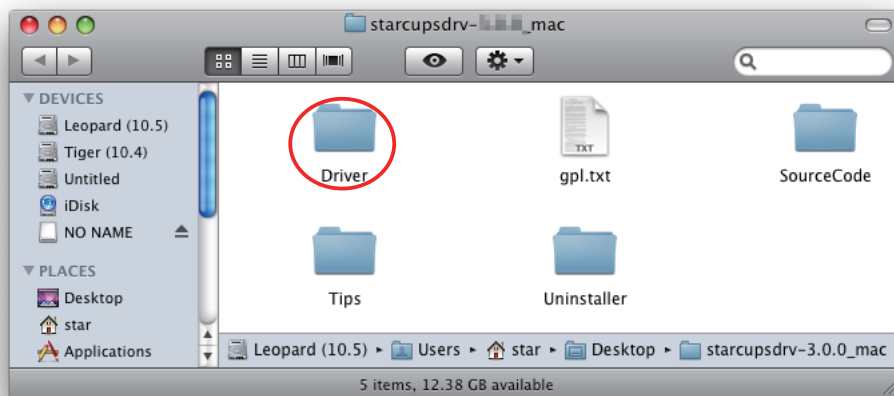
To install the driver, proceed as follows.

**Important :** When using a USB interface, turn on the printer's power after performing "1.1 Installing Star CUPS Drivers".

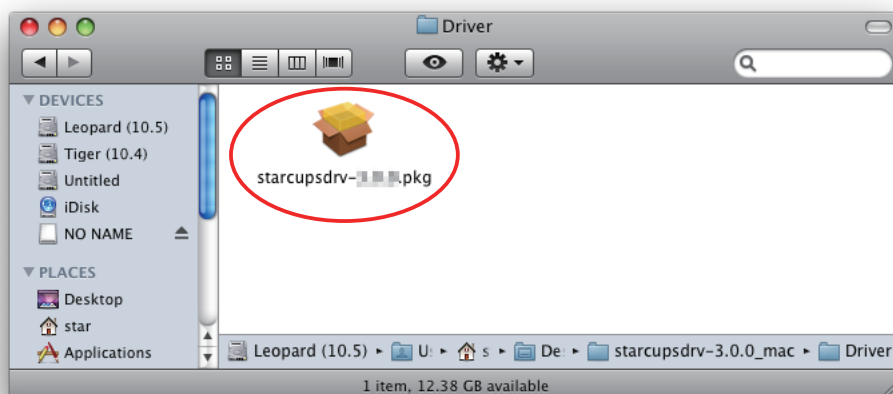
1. Place the "starcupsdrv-x.xx.x\_mac\_yyyymmdd.zip" file on your desktop and expand it by double-clicking on the file.



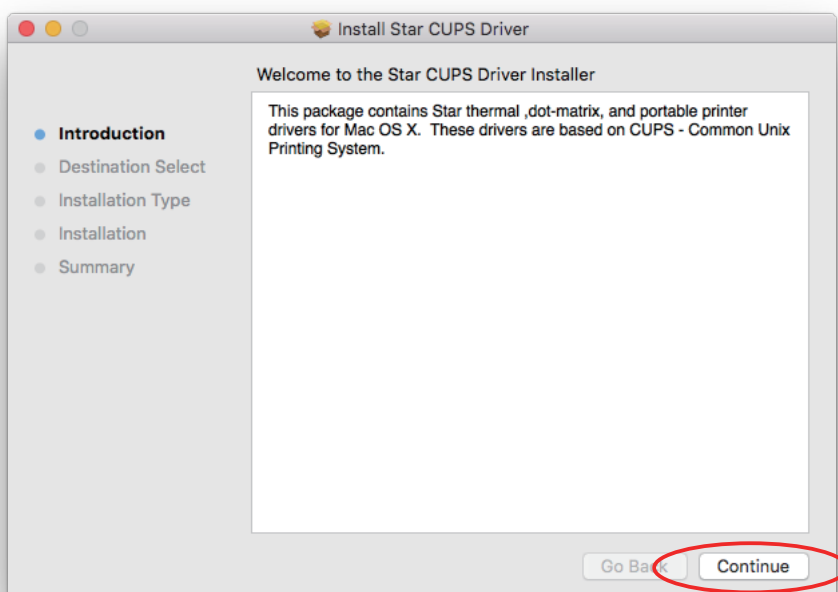
2. The screen below appears by double-clicking the expanded <starcupsdrv-x.xx.x\_mac> file. Click on the "Driver" folder to open it.



3. The screen below is displayed.  
Double-click <starcupsdrv-x.xx.x.pkg> to begin the installation.



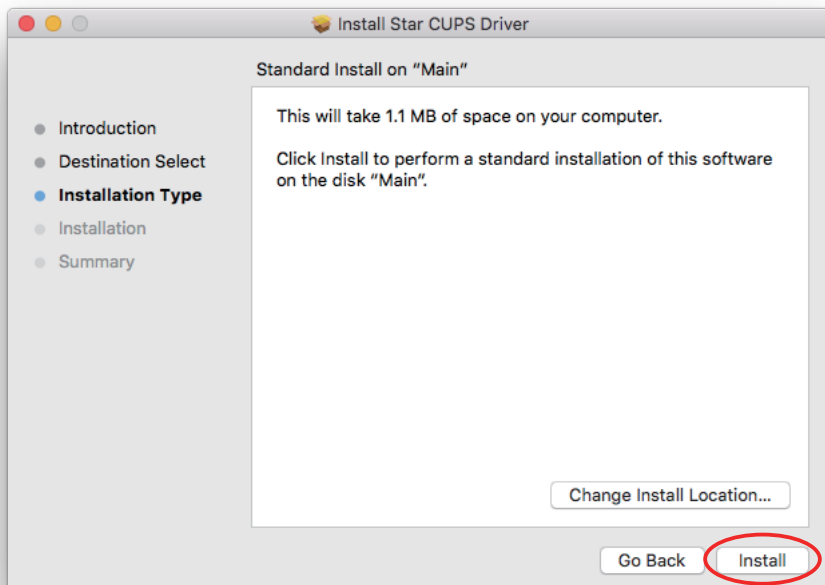
4. The following window is displayed.  
Click [ Continue ].



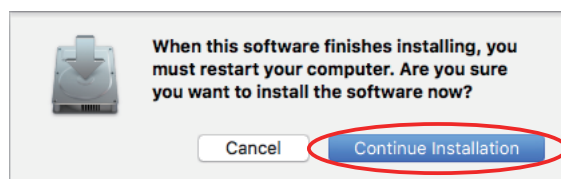
5. Select the harddisk to install with the program, then click [ Continue ].



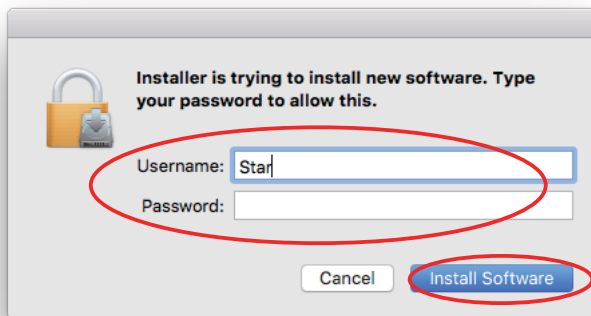
6. Click [ Install ] to start the installation.



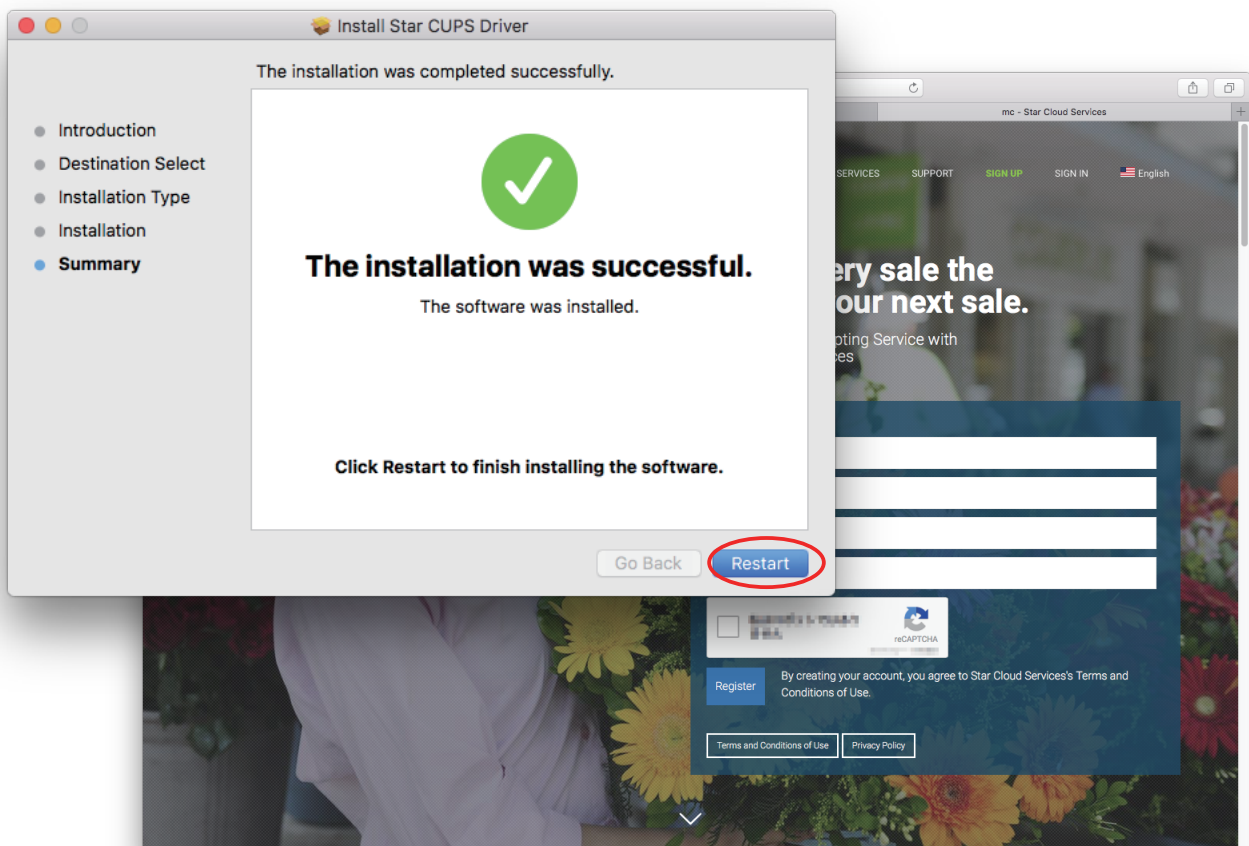
7. A confirmation message appears indicating that you need to restart your computer after the installation. If there is no problem, click [Continue installation].



8. If the confirmation window shown below is displayed, enter the user name and password having administrator rights, then click [ Install Software ].



9. The installation ends successfully.  
When the installation has ended successfully, the window shown below is displayed.  
And the website of Star Micronics Cloud will appear in the new browser window. You can register your Star Micronics Cloud account from this page to use our cloud services.  
Please click [Restart] and restart your computer.





## 1.2 Registering the Printer

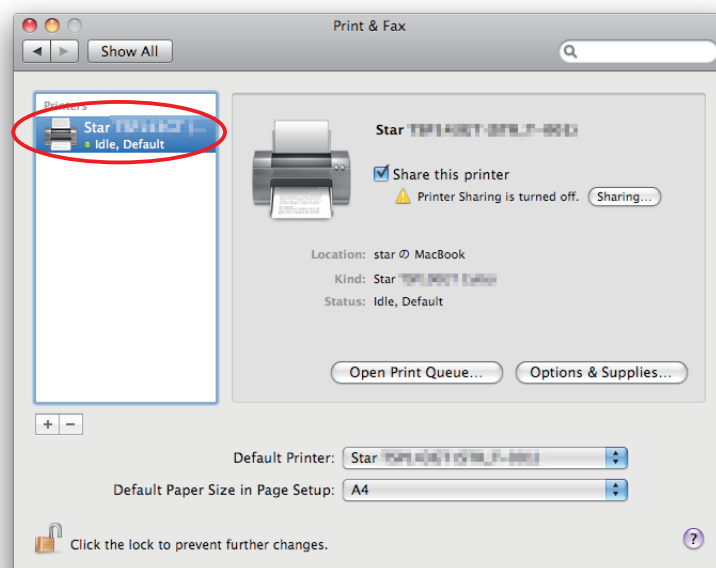
Procedures for registering the printer differ according to the type of interface you use. See the page relating to your environment.

### 1.2.1 When using a USB Interface

1. In the Apple mark in the menu bar, open [System Preferences] and click on the [Printers & Scanners] icon.



2. Connect the printer, and then turn on the printer's power switch.  
The Plug and Play feature detects the connection of the printer hardware and automatically installs the driver software.
3. If the name of the specified printer is added to the printer list, the printer has been added.

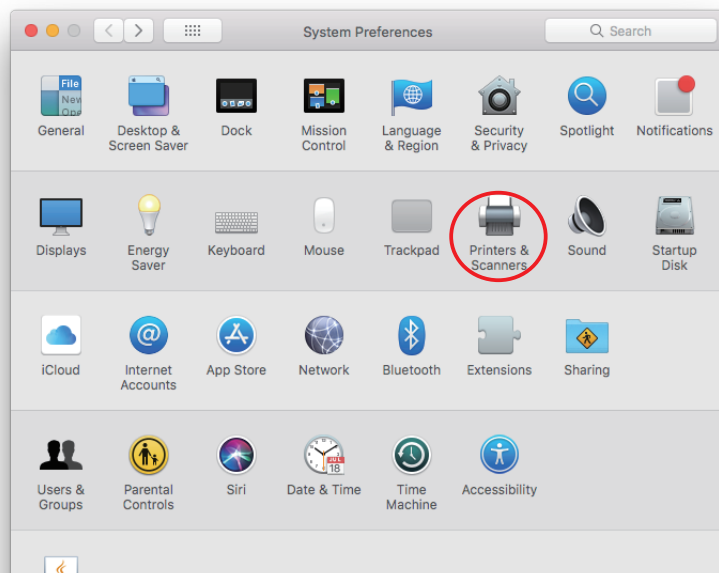


## 1.2.2 When using Ethernet Interface

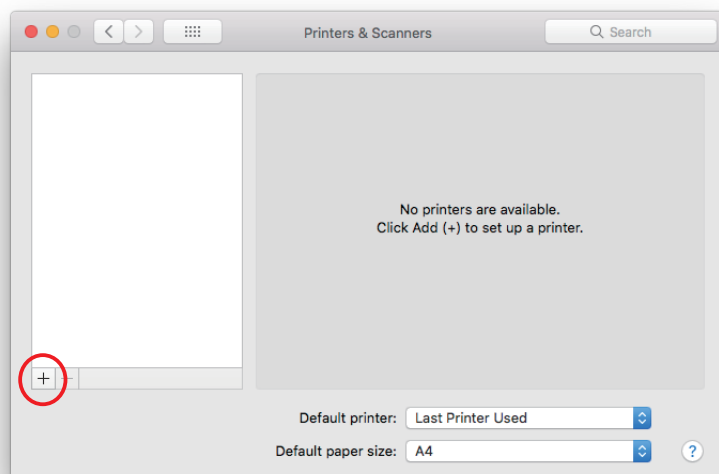
**Note :** When using IFBD-HI01X, LPR must be set Enable from WebUI.

Please refer to the "Set-up Manual for IFBD-HI01X" for details.

1. In the Apple mark in the menu bar, open [System Preferences] and click on the [Printers & Scanners] icon.



2. The Print & Fax window appears.  
Click on [ + ].

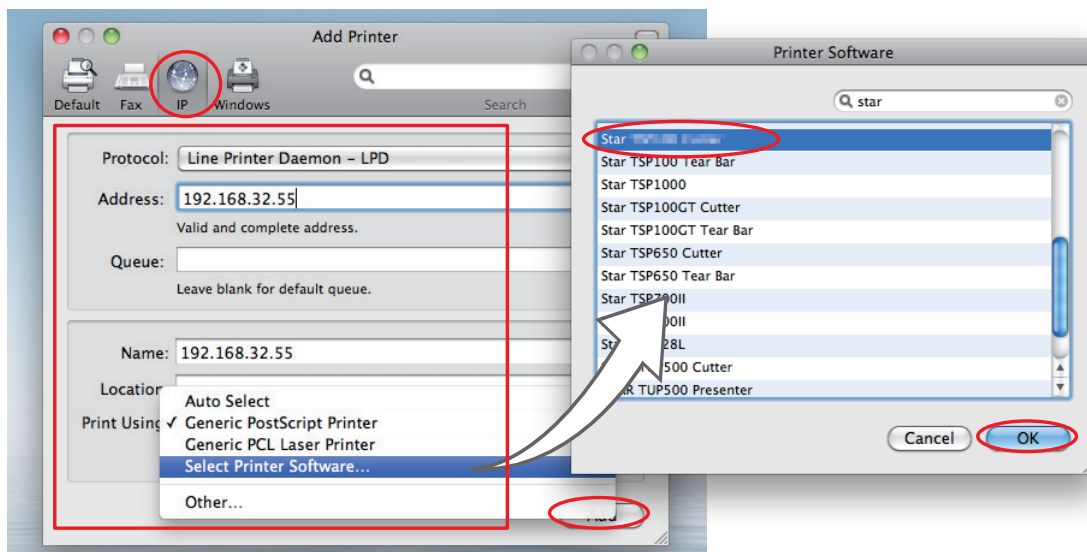


3. From the "IP", make the following settings and click on [Add].

- Protocol: Line Printer Daemon - LPD  
 Address: IP address of printer being set (Check in self-print)  
 Queue: Any character string (Printer cannot be used if left blank.)  
 Name: Any character string (The IP address is automatically input by default.)  
 Print Using: "Select the driver to use..." or "Select printer software..."  
 Select the driver to use.

**Point!** The correspondence table for printer models and drivers is shown below.

Series	Model	Driver
TSP100 Series	TSP113LAN	Star TSP100 Tear Bar
	TSP143LAN, TSP143IIW, TSP143IIILAN	Star TSP100 Cutter
TSP650II Series	TSP654II	Star TSP650 Cutter
TSP700II Series	TSP743II	Star TSP700II
TSP800II Series	TSP847II	Star TSP800II
mC-Print3 Series	MCP31L, MCP31LB	Star MCP31
mC-Print2 Series	MCP20, MCP20B	Star MCP20
	MCP21LB	Star MCP21

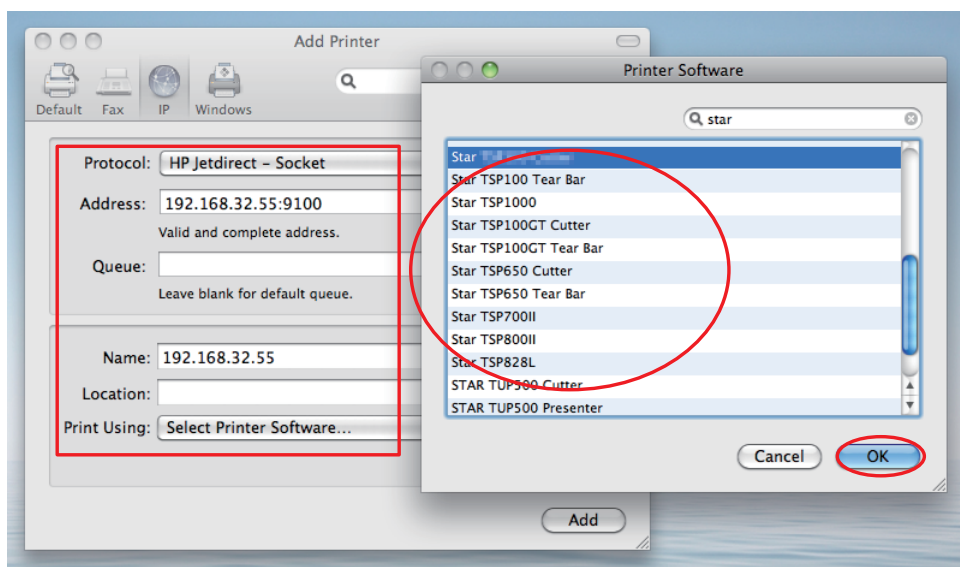


**Point!** When using port 9100, set the following.

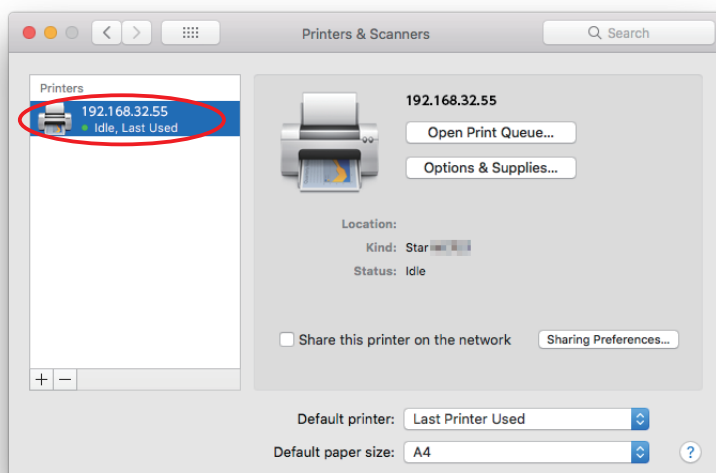
Protocol: HP Jet Direct - Socket

Address: [ IP address of printer being set ] : 9100


Print Using: "Select the driver to use..." or "Select printer software..."  
Select the driver to use.



4. If the name of the specified printer is added to the printer list, the printer has been added.



### 1.2.3 With the Bluetooth Interface

1. To pair them with the bluetooth printer, proceed as follows.
  - 1) Turn the printer power ON.
  - 2) Hold down the PAIR button of the bluetooth card for more than 10 seconds to set the pairing mode of the printer. ( Excluding TSP100IIIIBI, POP10, MCP31LB, MCP20B and MCP21LB )
  - 3) Click Bluetooth icon  , and select "Set up new device". When click "Forward", the system find the printer.
  - 4) Select the printer which is displayed in the Serch panel, and click "Continue". The system start the pairing.

If the pairing is unsuccessful, please try again.

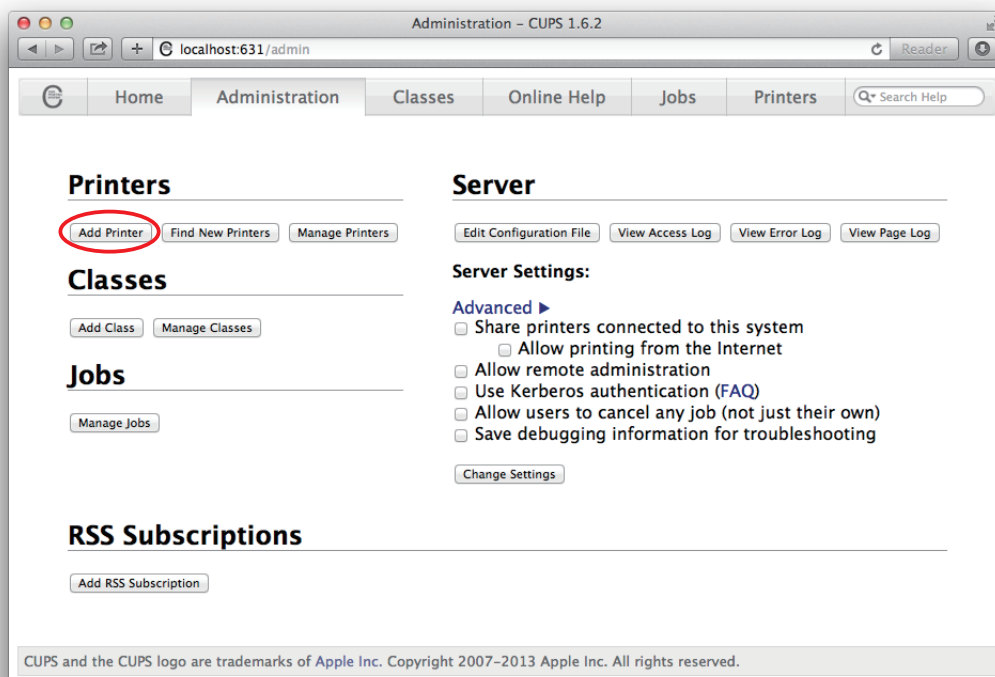
2. Open your favorite web browser and navigate to "http://localhost:631/admin".

**Point!** When accessing the CUPS management screen for the first time, you cannot access it as the web interface is disabled.  
Please execute the command as below from [Utility]-[Terminal].

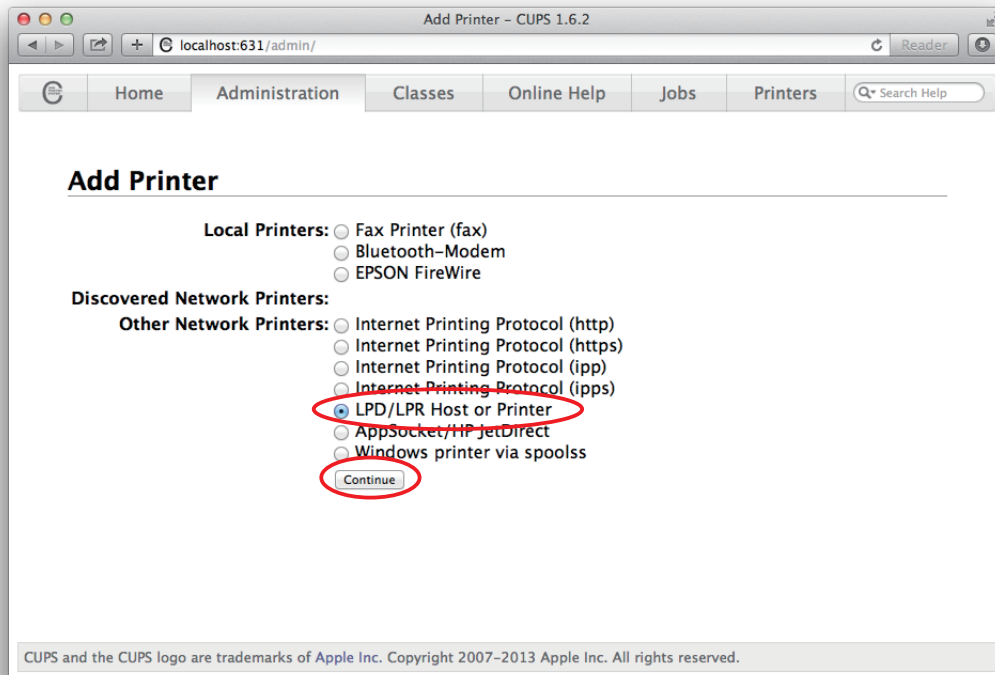
**cupswctl WebInterface=yes**

3. Click "Add Printer".

**Note:** When a dialog box is displayed requesting certification, enter the root password and press [Yes].



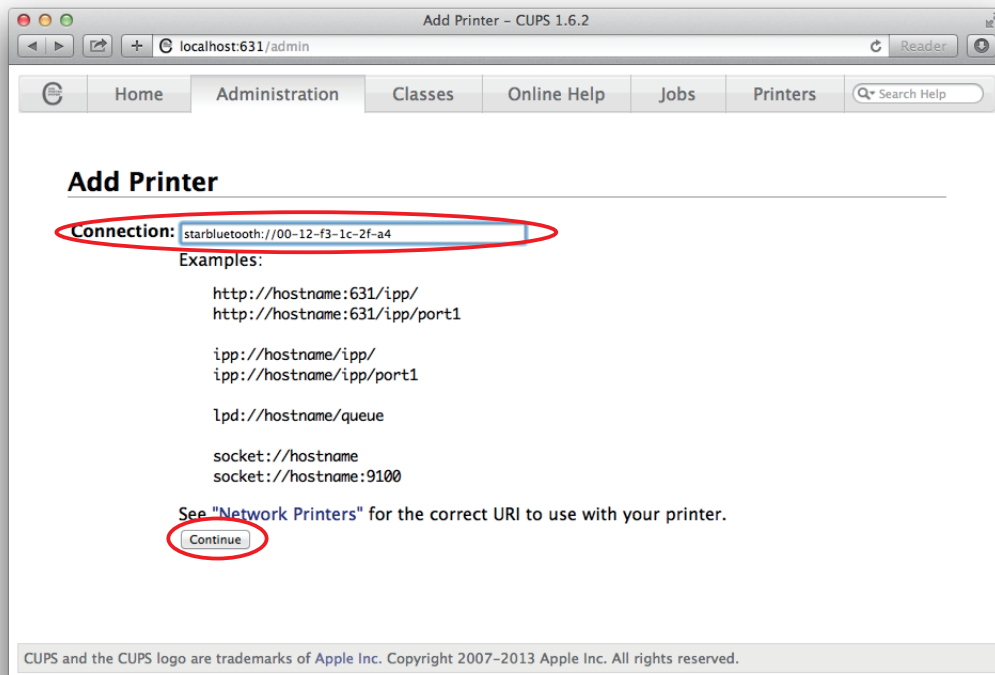
4. Select the "LPD/LPR Host or Printer". Then click "Continue".



5. Specify the device URI for the printer as shown below and click "Continue".

starbluetooth://<<Bluetooth Address>>

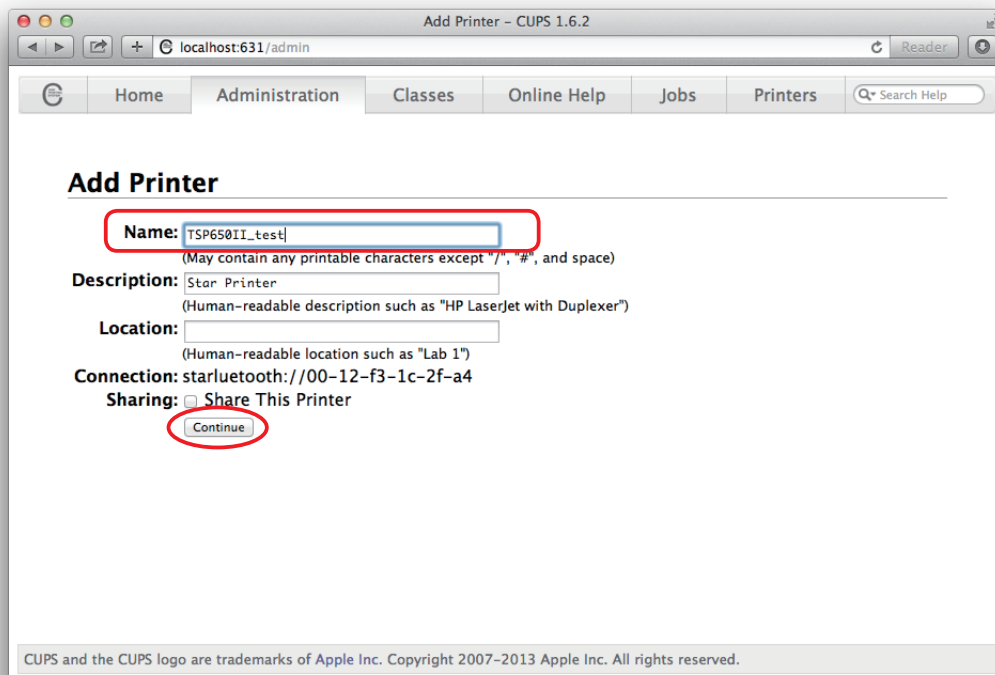
ex. starbluetooth://00-12-f3-1c-2f-a4



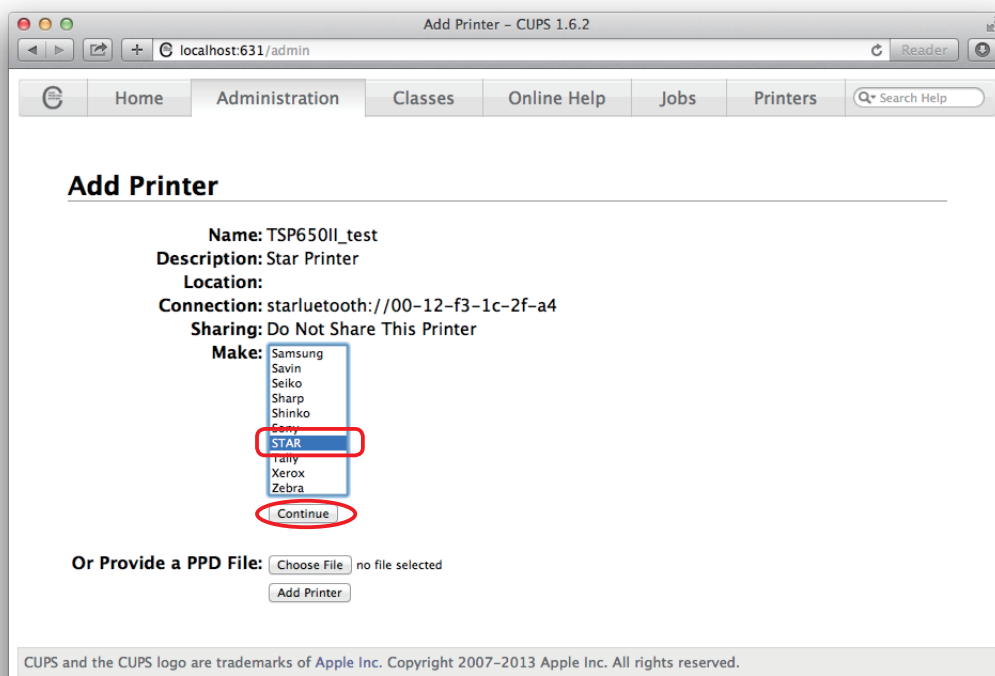
**Point!**

The Bluetooth address is included in the Bluetooth information printed by self-print (by powering on while pressing the Feed button).

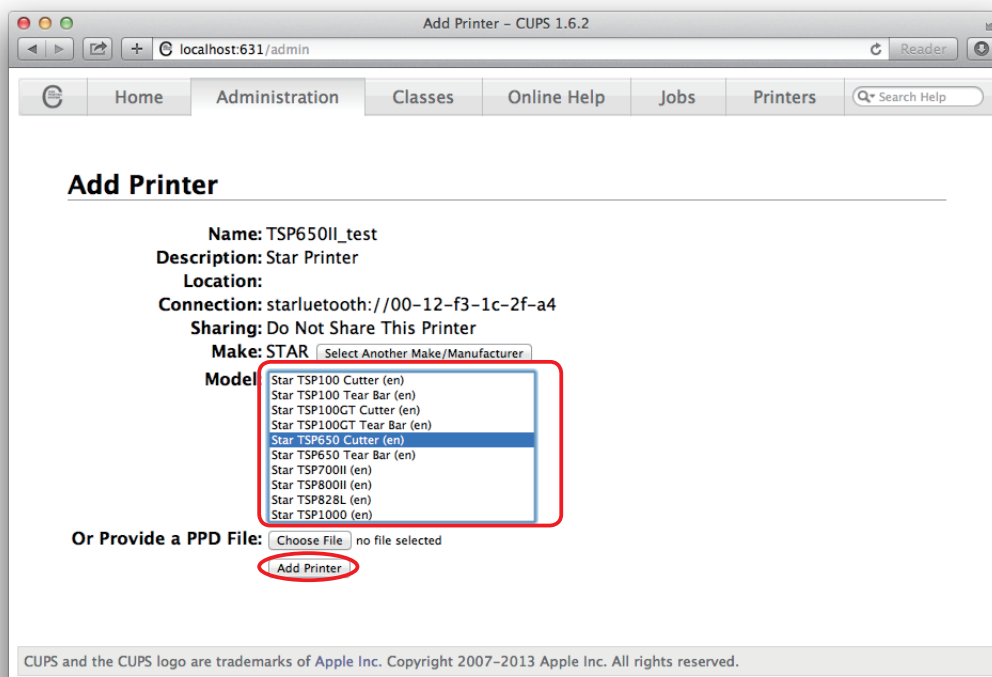
6. In the Add Printer screen, enter the printer name, location and description. Then click "Continue". Location and Description can be left blank.



7. Select "STAR" as the Make. Then click "Continue".



8. Select the printer model. Then click "Add Printer".



**Point!** The correspondence table for printer models and drivers is shown below.

Series	Model	Driver
TSP100 Series	TSP143IIIBI	Star TSP100 Cutter
TSP650II Series	TSP654II	Star TSP650 Cutter
TSP700II Series	TSP743II	Star TSP700II
TSP800II Series	TSP847II	Star TSP800II
mPOP Series	POP10	Star POP10
mC-Print3 Series	MCP31LB	Star MCP31
mC-Print2 Series	MCP20B	Star MCP20
	MCP21LB	Star MCP21

This completes the bluetooth printer installation and registration.

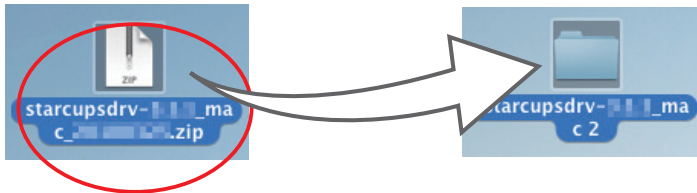


## 1.3 Uninstalling Star CUPS Drivers

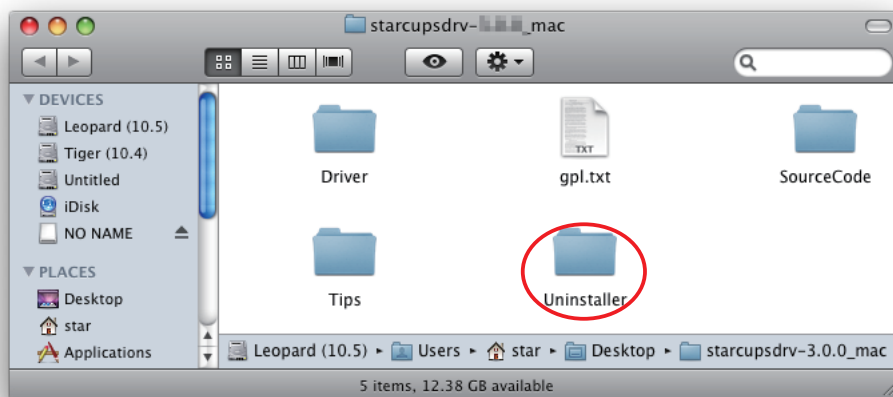
To uninstall the driver, proceed as follows.

**Important :** When you uninstall the Star CUPS Driver, all drivers for Star Printers installed on your Macintosh computer are deleted.  
The setting file for Star Micronics Cloud Application installed at the same time is deleted as well.

1. Turn off the power switch of the Printer.
2. Double-click [ starcupsdrv-x.xx.x\_mac\_yyyymmdd.zip ] you copied to your desktop to decompress it.

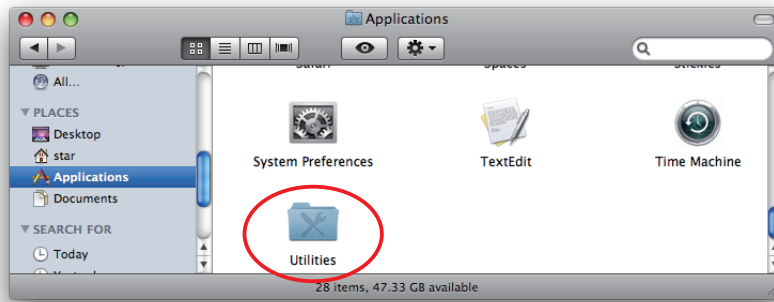


3. The screen below appears by double-clicking the expanded <starcupsdrv-x.xx.x\_mac> file. Click on the "Uninstaller" folder to open it.

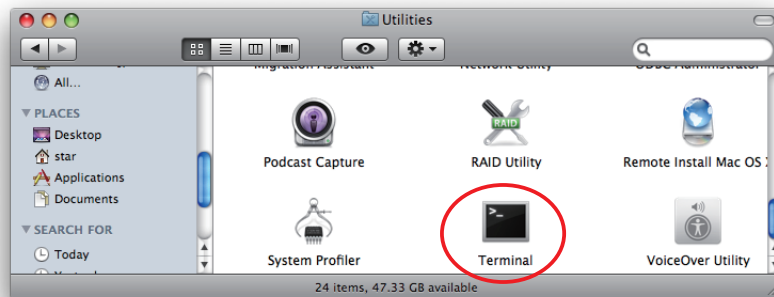




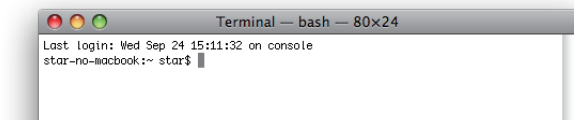
- Startup the Finder from the Mac OS X Dock and click [Applications] - [Utilities].



- Click on [Terminal].

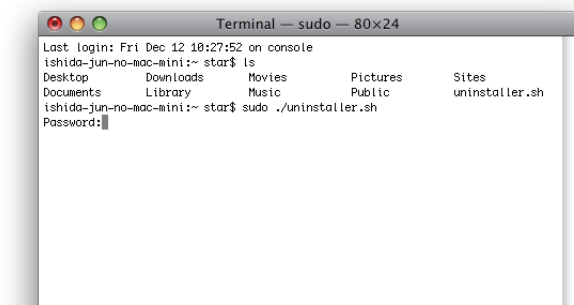


- The terminal starts up.



- Uninstall the Star Printer Driver by running the following command on your terminal.  
When starting up, you will be prompted to input your user password.

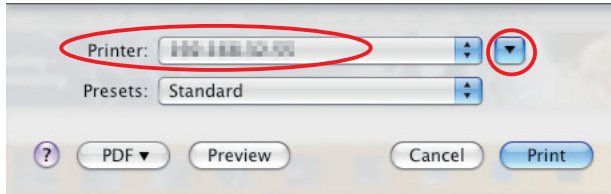
**sudo ./uninstaller.sh**



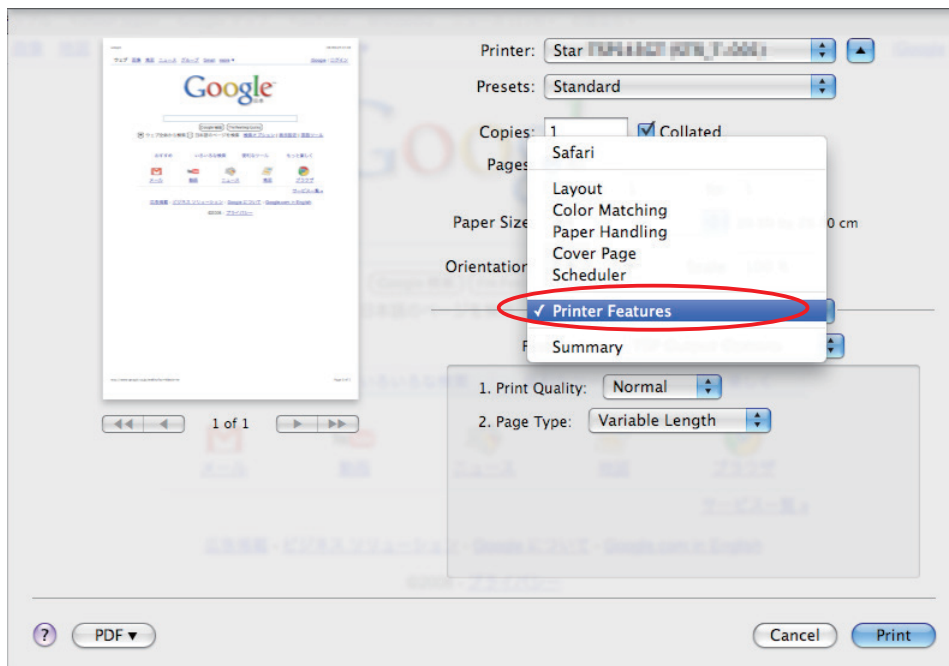
## 2. Setting Printer Functions

Use the dialog box opened by [File] -> [Print] in the Mac OS X menu.

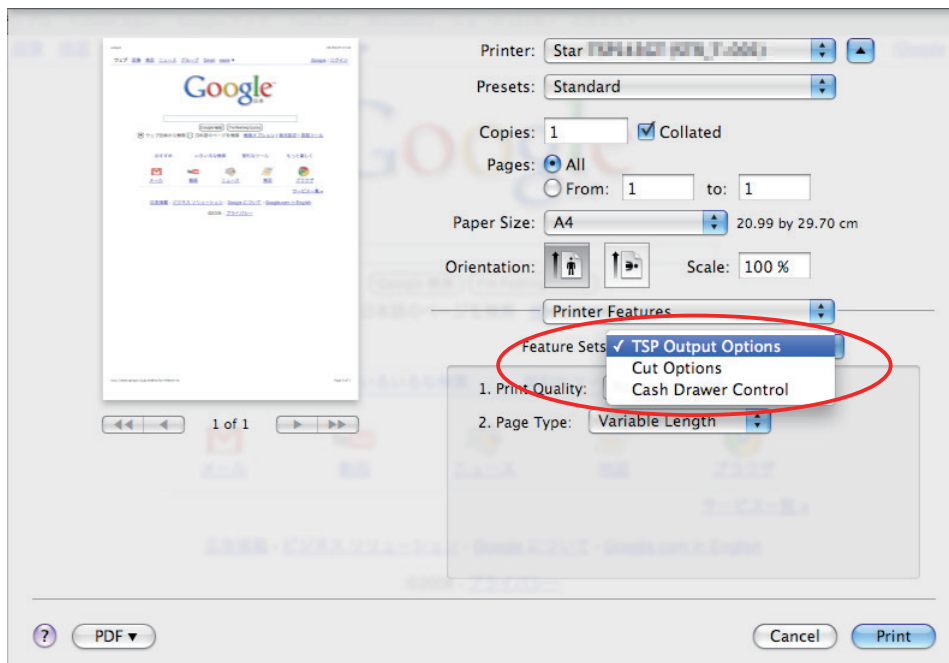
From the "Printer:" pull-down menu, select the printer name to set, then click [▼] to display the details.



Select "Printer Features" from the setting pull-down menu.



"Feature Sets:" Customizes printer operation.



## 2.1 Function List

Depending on the printer that you select, the functions that are displayed may differ, and only the ones displayed can be set.

Refer to the function guide for details.

### ■ Output Options

#### • Print Speed:

Sets the print speed. Note that the setting also affects the print quality.

Setting	Default	Details
High	✓	Print speed has priority over quality.
Middle *		Print quality and speed are in the middle.
Low		Best quality, but slow print speed.

\* Not supported by the mPOP series.

**Point!** This function is supported by the TSP100, TSP650II, TSP700II, TSP800II, mPOP and mC-Print3 series.

#### • Print Density:

Sets the printing density.

Setting	Default	Details
-3 to -1 *		Larger value with -(minus) makes print density lighter.
Standard	✓	Prints with normal density.
+1 to +3		Larger value with +(plus) makes print density darker.

\* Not supported by the mPOP series and mC-Print2.

**Point!** This function is supported by the TSP650II, mPOP, mC-Print3 and mC-Print2 series.

#### • Page Type:

Sets the page type.

Setting	Default	Details
Variable Length	✓	Does not output blank data until the bottom of the page. Receipt ends after final data is printed.
Fixed Length		Outputs blank data as a blank until the bottom of the page. Receipt ends after printing the length specified by paper size.

### • Top Search:

Selects whether the printer executes a reverse-feed before print.

Setting	Default	Details
Disable	✓	No reverse-feed before print.
Enable		Executes reverse-feed before print.

**Point!** This function is supported by TSP700II series and TSP800II series.

**Note:** This function is available only when the **Cut Options** setting is configured to 'Full Cut'.  
The function is not available when 'PartialCut' is selected.

### • Top Margin:

Selects whether the printer executes a reverse-feed before print.

Setting	Default	Details
Disable	✓	No reverse-feed before print. The default margins (11 mm) are applied.
2mm to 10mm		Executes reverse-feed before print.

**Point!** This function is supported by mC-Print3 series.

**Limitation for Top Margin Setting :**

When the top margin is set to 10 mm or less, the paper length (cut length) should not exceed 50mm.  
(If the cut paper remains at the paper-exit, a paper jam may occur. There is no limitation when the cut paper is removed.)

## ■ Cut Options ( Cutter Model )

### • Page Cut Type:

This sets the cutting method for the end of all pages, excluding the last page.

Setting	Default	Details
No Cut	✓	Does not perform a cut and page feed.
Partial Cut		Feeds paper to cutting position, then cuts the paper, leaving one uncut point in center of paper.
Full Cut *		Paper is fed to cutting position, then a full cut is applied.

\* Not supported by the TSP100 series.

### • Document Cut Type:

This sets the cutting method for the last page.

Setting	Default	Details
No Cut		Does not perform a cut and page feed.
Partial Cut	✓	Feeds paper to cutting position, then cuts the paper, leaving one uncut point in center of paper.
Full Cut *		Paper is fed to cutting position, then a full cut is applied.
Tear Bar		Paper is fed to the tear bar (cutting position).

\* Not supported by the TSP100 series.

## ■ Feed Options ( Tear Bar Model )

### • Page Feed Type:

This sets the page feed operation for the end of all pages, excluding the last page.

Setting	Default	Details
No Feed	✓	The paper feed operation is not performed.
Tear Bar		Paper is fed to the tear bar (cutting position).

### • Document Feed Type:

This sets the page feed operation for the last page.

Setting	Default	Details
No Feed		The paper feed operation is not performed.
Tear Bar	✓	Paper is fed to the tear bar (cutting position).

## ■ Data Treatment Recover From Error

### • Data Treatment Recover From Error:

When an error occurs, you can handle the unprinted data which has already been sent to the printer as below.

Setting	Default	Details
No Use		After the recovery, the unprinted data of the remainder is printed after the recovery from the error.
Clear Data By Document Unit	✓	After the recovery, the unprinted data of the remainder is canceled after the recovery from the error.

**Point!** This function is supported by TSP650II, TSP700II, TSP800II, mPOP, mC-Print3 and mC-Print2 series.

#### **Note (TSP700II only)**

This feature does not operate correctly with old firmware. If you are using version less than 3.0 of the firmware, select 'No Use'. You can check the firmware version by executing Self-Printing. To update the printer's firmware, contact your STAR dealer.

## ■ Cash Drawer Control

### • Cash Drawer:

This sets the operations of the cash drawer.

Setting	Default	Details
Do Not Open Drawers	✓	No cash drawer drive.
Open Drawer 1		Drives cash drawer 1 immediately after printing.
Open Drawer 2		Drives cash drawer 2 immediately after printing.
Open Drawer 1 and 2		Drives cash drawers 1 and 2 immediately after printing.

### • Cash Drawer 1 Pulse Width:

This sets the cash drawer 1 pulse width.

Setting	Default	Details
10 milliseconds		Sets the pulse width to 0.01 seconds.
100 milliseconds		Sets the pulse width to 0.1 seconds.
200 milliseconds	✓	Sets the pulse width to 0.2 seconds.
300 milliseconds		Sets the pulse width to 0.3 seconds.
400 milliseconds		Sets the pulse width to 0.4 seconds.
500 milliseconds		Sets the pulse width to 0.5 seconds.
600 milliseconds		Sets the pulse width to 0.6 seconds.
700 milliseconds		Sets the pulse width to 0.7 seconds.
800 milliseconds		Sets the pulse width to 0.8 seconds.
900 milliseconds		Sets the pulse width to 0.9 seconds.
1000 milliseconds		Sets the pulse width to 1.0 seconds.
1100 milliseconds		Sets the pulse width to 1.1 seconds.
1200 milliseconds		Sets the pulse width to 1.2 seconds.

**Note:** 1) Do not enable the cash drawer and buzzer at the same time.  
2) The pulse width for cash drawer 2 is fixed at 200 milliseconds.



## ■ Buzzer 1 Control and Buzzer 2 Control

### • Buzzer 1 ( or Buzzer 2 ):

This sets the drive of either buzzer 1 or buzzer 2.

Setting	Default	Details
No Use	✓	Buzzer 1 or buzzer 2 is not used.
Document Top		Executes buzzer 1 (or 2) at the top of the document.
Document Bottom		Executes buzzer 1 (or 2) at the bottom of the document.

**Cautions :** When a device other than a buzzer, such as a cash drawer, is connected, select 'No Use'.  
There is the possibility that the connected device and the circuit can be damaged by using the Buzzer Control command.

### • Buzzer 1 ( Buzzer 2 ) - On Time:

This sets the time to ring buzzer 1 or buzzer 2.

Setting	Default	Details
20 milliseconds	✓	Sets to 0.02 seconds.
40 milliseconds		Sets to 0.04 seconds.
100 milliseconds		Sets to 0.1 seconds.
200 milliseconds		Sets to 0.2 seconds.
500 milliseconds		Sets to 0.5 seconds.
1000 milliseconds		Sets to 1.0 seconds.
2000 milliseconds		Sets to 2.0 seconds.
5000 milliseconds		Sets to 5.0 seconds.

### • Buzzer 1 ( Buzzer 2 ) - Off Time:

This sets buzzer 1 or buzzer 2 off time.

Setting	Default	Details
20 milliseconds	✓	Sets to 0.02 seconds.
40 milliseconds		Sets to 0.04 seconds.
100 milliseconds		Sets to 0.1 seconds.
200 milliseconds		Sets to 0.2 seconds.
500 milliseconds		Sets to 0.5 seconds.
1000 milliseconds		Sets to 1.0 seconds.
2000 milliseconds		Sets to 2.0 seconds.
5000 milliseconds		Sets to 5.0 seconds.

• **Buzzer 1 ( Buzzer 2 ) - Repeat:**

This sets the number of times to ring buzzer 1 (or buzzer 2) driven by the timing set at 1:Buzzer 1 (or Buzzer 2).

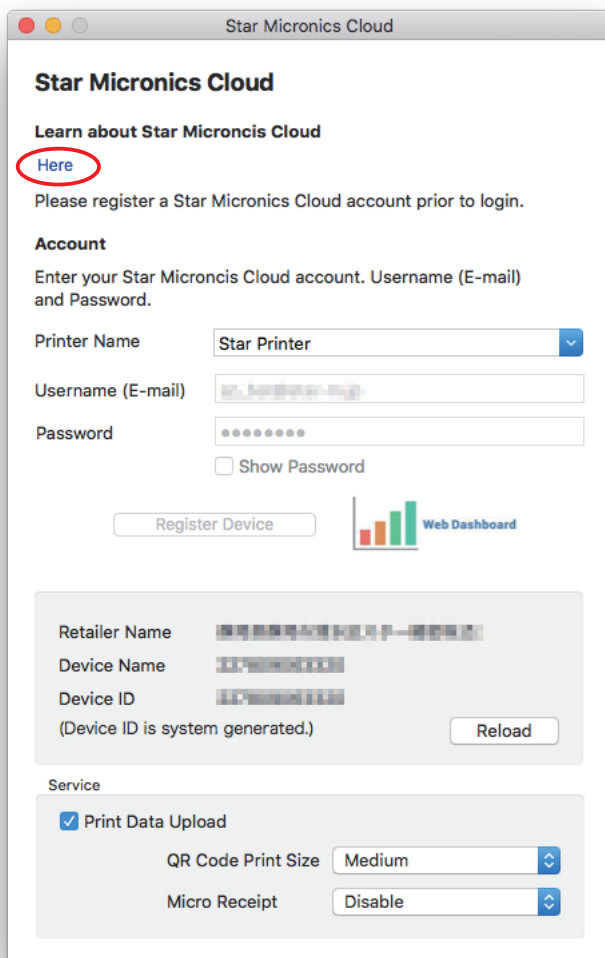
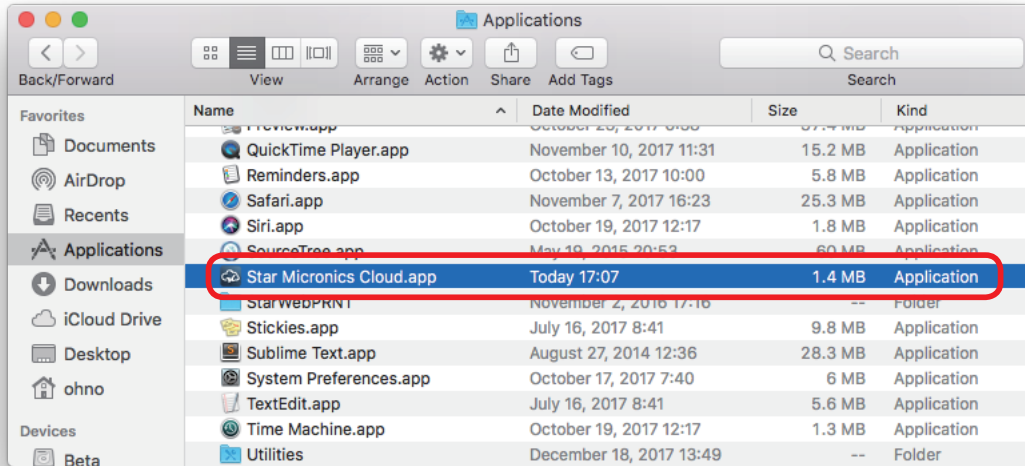
The buzzer will stop regardless of the number of times set to ring by pressing the "FEED".

Setting	Default	Details
1	✓	Rings buzzer 1 (or buzzer 2) Once.
2		Rings buzzer 1 (or buzzer 2) twice.
3		Rings buzzer 1 (or buzzer 2) three times.
5		Rings buzzer 1 (or buzzer 2) five times.
10		Rings buzzer 1 (or buzzer 2) ten times.
15		Rings buzzer 1 (or buzzer 2) fifteen times.
20		Rings buzzer 1 (or buzzer 2) twenty times.

**Note :** 1) Do not enable the cash drawer and buzzer at the same time.  
2) The buzzer ringing time and off time should not exceed 90 seconds in total.

## 2.2 Star Micronics Cloud

When you install this driver, the Star Micronics Cloud application will be installed automatically at the same time. Start [ Star Micronics Cloud.app ] from [Applications].



To use the Star Micronics Cloud, it is required to register a Star Micronics Cloud account in advance.

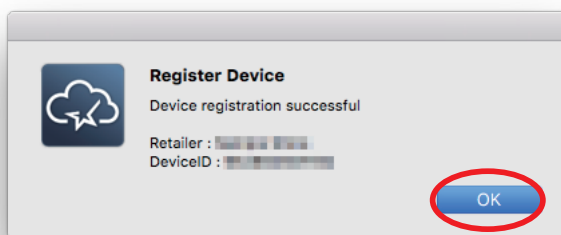
Please click "Here" for details.

## 2.2.1 Device Registration

Register the device (Star printer queue) using your registered Star Micronics Cloud account. Once you have registered the device, you can use the service of uploading print data to the cloud server and manage the registered device from the Star Micronics Cloud dashboard.

1. Select a device (a printer queue) which you would like to register(1).
2. Enter the username and the password of your registered Star Micronics Cloud account(2) and click "Register Device"(3).

3. When the device is registered successfully, the following dialog appears. Click OK.



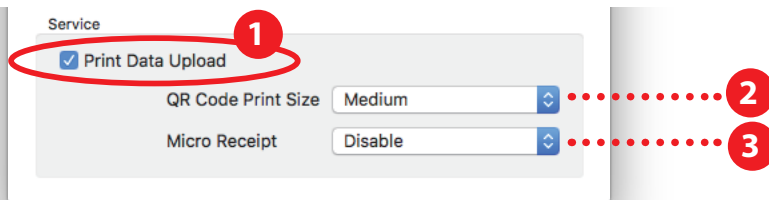
4. The account information of the connected Star Micronics Cloud appears. You can change the device name by connecting the dashboard with the registered account from "Connect to Dashboard Website"(4). When the device name is changed, click to [Reload] the device information on the screen(5).

## 2.2.2 Setting of Registration

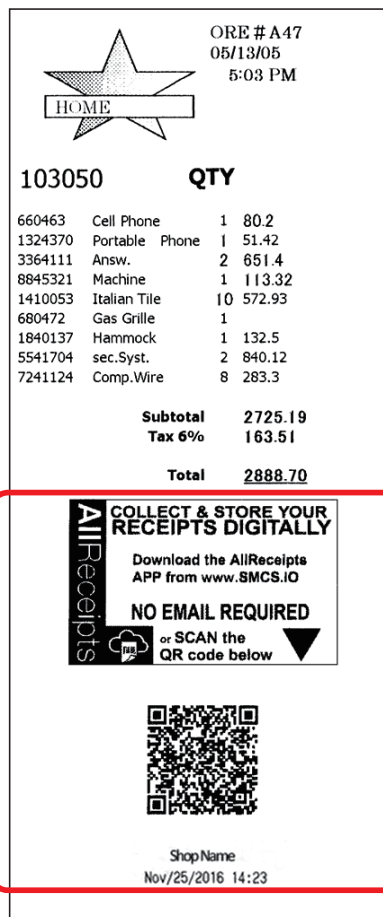
When "Print Data Upload" is checked ①, the QR code is added on the receipt and the data of printed receipt is uploaded on the Star Micronics Cloud Services.

The print size of QR code can be specified ②.

"Information + QR Code" or "Only QR Code" can be set to print without printing the original receipt data uploaded to the Star Micronics Cloud using the Micro Receipt function ③.



### ■ Disable



### ■ Information + QR Code



### ■ QR Code

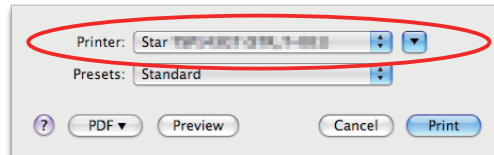


**Note :** To upload data on the Star Micronics Cloud Services, the host device must be connected to the network. Please note that data may not be uploaded on the Star Micronics Cloud Services even though a QR code is added on the receipt depending on the condition of network connection.

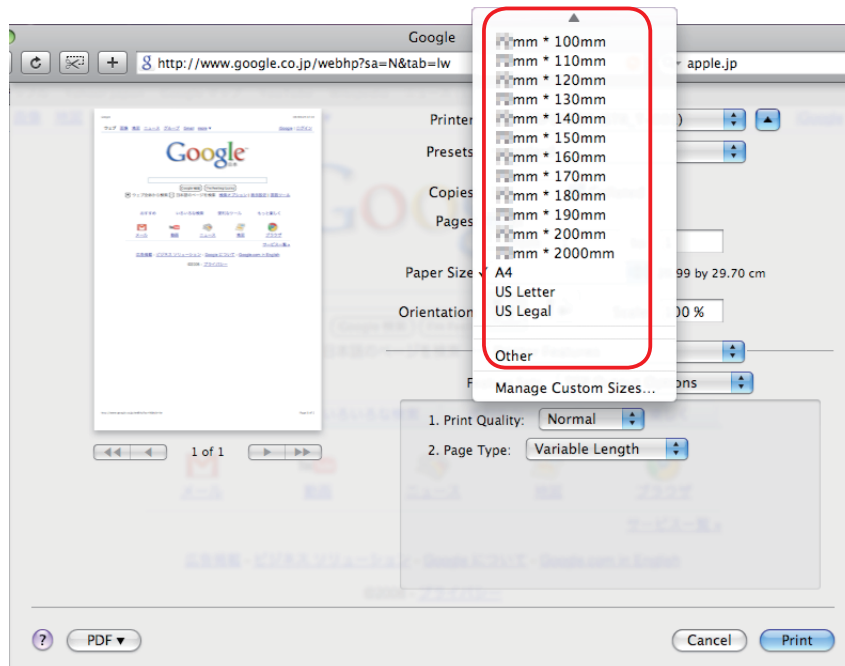
## 3. Setting the Paper Size

### 3.1 Setting the Paper Size

From the menu bar on Mac OS X, open [File] - [Printers].  
Select the printer to set from the "Printer:" pull-down menu.  
If details are not displayed, click on [ ▼ ] to display them.



Next, select the paper size from the Paper Size pull-down menu.  
See section 3.2 Settable Paper Sizes for details on the sizes of paper that can be used.



**Point!** When a paper size is selected that exceeds the maximum printing width, the print is shrunk to fit the maximum printing width.

#### Limitations for Bluetooth models:

The maximum page length printable by Bluetooth printers is 1500 mm. Please specify the paper size within 1500 mm.

## 3.2 Settable Paper Sizes

The following paper sizes are available and can be set.

Paper Size	Supported Models			
	TSP100 Series	TSP654II	TSP700II	TSP800II
50.8 * 30mm	○	○	○	
50.8 * 40mm	○	○	○	
⋮	⋮	⋮	⋮	
50.8 * 190mm	○	○	○	
50.8 * 200mm	○	○	○	
50.8 * 1500mm		○	○	
50.8 * 2000mm	○	○	○	
52 * 30mm			○	
52 * 40mm			○	
⋮			⋮	
52 * 190mm			○	
52 * 200mm			○	
52 * 1500mm			○	
52 * 2000mm			○	
52.5 * 30mm			○	
52.5 * 40mm			○	
⋮			⋮	
52.5 * 190mm			○	
52.5 * 200mm			○	
52.5 * 1500mm			○	
52.5 * 2000mm			○	
72 * 30mm	○	○	○	
72 * 40mm	○	○	○	
⋮	⋮	⋮	⋮	
72 * 190mm	○	○	○	
72 * 200mm	○	○	○	
72 * 1500mm		○	○	
72 * 2000mm	○	○	○	
80 * 30mm			○	
80 * 40mm			○	
⋮			⋮	
80 * 190mm			○	
80 * 200mm			○	
80 * 1500mm			○	
80 * 2000mm			○	
104 * 30mm				○
104 * 40mm				○
⋮				⋮
104 * 190mm				○
104 * 200mm				○
104 * 1500mm				○
104 * 2000mm				○
A4	○	○	○	○
Letter	○	○	○	○
Legal	○	○	○	○

Paper Size	Supported Models		
	mPOP	mC-Print3	mC-Print2
48 * 100mm	○	○	○
48 * 200mm	○	○	○
48 * 1500mm	○	○	○
50.8 * 100mm	○	○	○
50.8 * 200mm	○	○	○
50.8 * 1500mm	○	○	○
54 * 100mm	○		○
54 * 200mm	○		○
54 * 1500mm	○		○
72 * 100mm		○	
72 * 200mm		○	
72 * 1500mm		○	
A4	○	○	○
Letter	○	○	○
Legal	○	○	○

In some cases, these settings will not work as expected depending on the application being used to print from.

\* TSP100 Series :TSP100IIIW/LAN/BI/U, TSP100IIU, TSP143U, TSP143GT, TSP143LAN, TSP113U, TSP113GT, TSP113LAN

## 4. Guidelines for Using an Ethernet Environment

The printer's IP address must be set in advance to use a printer that supports LAN using this driver. If your LAN environment does not allow acquisition of an IP address from a DHCP server, set the IP address to the printer in advance.

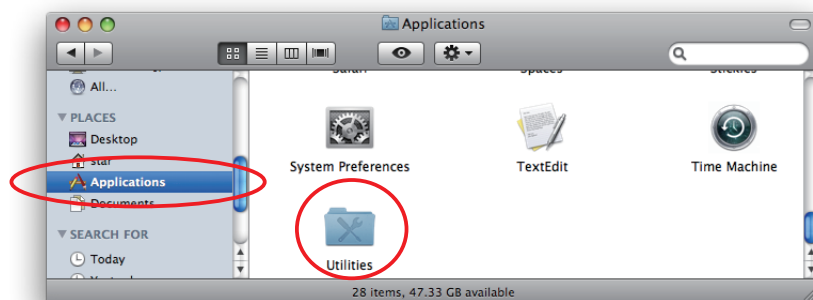
### 4.1 Setting a Temporary IP Address

Use the following procedures to set a temporary IP address to the printer.

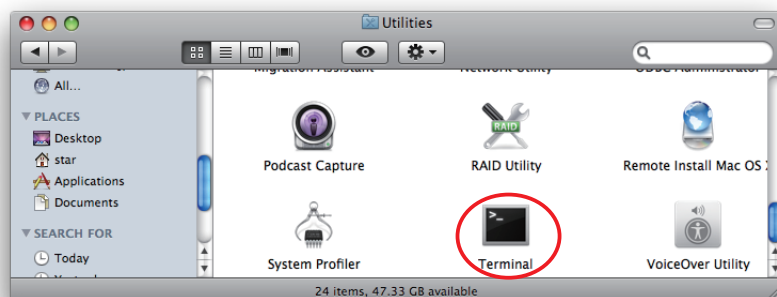
**Important :** Printer settings should be done by a user with administrator rights.

**Point!** A MAC address of the printer to be set is necessary for the temporary IP address. Confirm the MAC address in a self-print from the printer. See the Hardware Manual for details on running a self-print.

1. Connect the Ethernet cable to the printer and turn the power ON to the printer.
2. Startup the Finder from the Mac OS X Dock and click [Applications] - [Utilities].

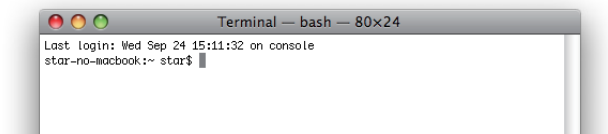


3. Click on [Terminal].





3. The terminal starts up.



Execute the following command in the terminal to set a temporary IP address to the printer.

1. `sudo arp -d [Printer temporary IP address]`
2. `sudo arp -s [Printer temporary IP address] [Printer MAC address]`
3. `ping -c 4 [Printer temporary IP address]`
4. `sudo arp -d [Printer temporary IP address]`

*Example of temporary IP address (192.168.222.217)*

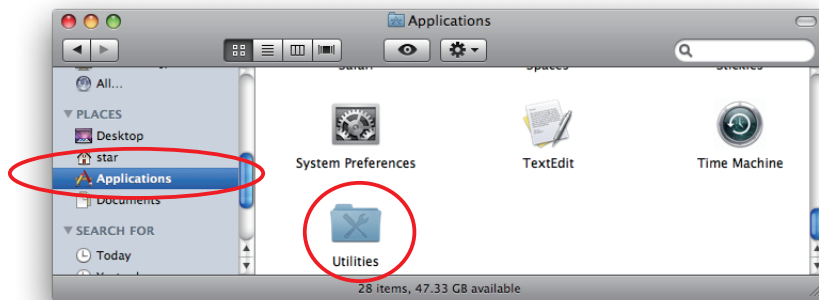
```
sudo arp -d 192.168.222.217
sudo arp -s 192.168.222.217 00:11:62:00:03:4D
ping -c 4 192.168.222.217
sudo arp -d 192.168.222.217
```

**Note:** The temporary IP address set here is erased when the printer power is turned off.  
Continue by setting the IP address. ( From (2) in section 4.2. )

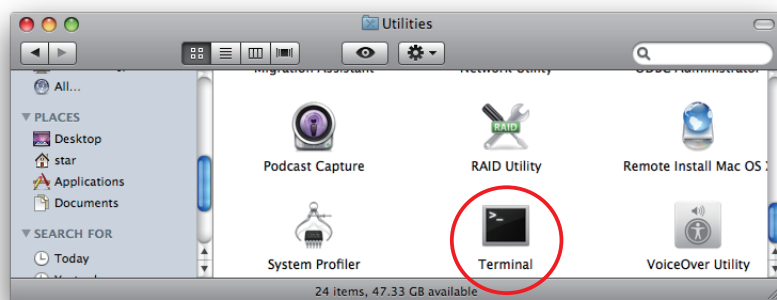
## 4.2 Setting the IP Address << StarPrinter TELNET Utility >>

The Telnet command connects directly to the printer to make settings.

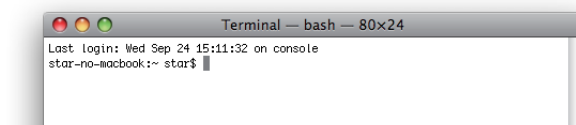
1. Connect the Ethernet cable to the printer and turn the power ON to the printer.
2. Startup the Finder from the Mac OS X Dock, and click [Applications] - [Utilities].



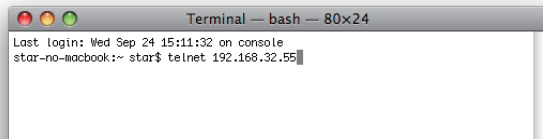
3. Click on [Terminal].



4. The terminal starts up.



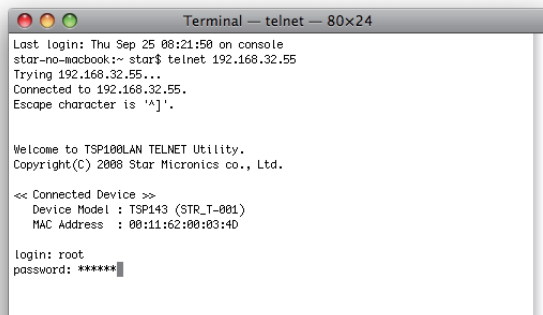
5. Use the Telnet command to connect to the printer to set.



Ex. >telnet 192.168.222.217 (The IP address of the printer to be set.)

**Note:** You cannot connect to a printer that does not have an IP address. See section 4.1 Setting a Temporary IP Address for details on setting such an address on the printer in advance.

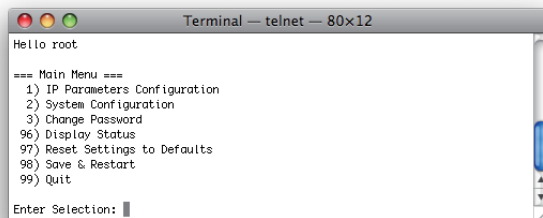
6. Log-in to the printer to be set as a "root" user.  
The default password is "public."  
To change the password, input the changed password.



7. The following menu is displayed.

- 1) IP Parameters Configuration
  - 2) System Configuration
  - 3) Change Password
  - 96) Display Status
  - 97) Reset Settings to Defaults
  - 98) Save and Restart
  - 99) Quit
- Enter Selection

Input the number that corresponds to your selection.



8. When all settings are completed, save the changes using "98( Save and Restart)" - "1(Save & Restart device & Configuration printing)", or "2 (Save & Restart device)". The settings of the printer will be saved. Reset the printer.

**Example :** Set the fixed IP address <192.168.222.55> on the printer set with the temporary IP address <192.168.222.217>, the check printing the setting contents.

```
>telnet 192.168.222.217
login : root
password : ***** ( Use "public" when not making changes. )
Enter Selection : 1 ( IP Parameters Configuration )
Enter Selection : 1 ( Static )
Enter Selection : 1 ( IP Address )
Enter IP address (x.x.x.x) : 192.168.222.55
Enter Selection : 99 ( Back to IP Address Menu )
Enter Selection : 99 ( Back to Main Menu )
Enter Selection : 98 ( Save & Restart )
Enter Selection : 1 ( Save & Configuration printing & Restart device )
```

\* The actual input portions are shown in bold characters.

## 5. Guidelines for Using the lpr Command

When printing using the lpr command from the command line, you can specify options with the following format.

**\$lpr -o [option]=[value] -o [option]=[value] ... [Filename]**

In [option] • [value], specify the name shown in the command "specify name" in section 5.1 List of Supported Functions".

Also for options not specified, print using the default driver settings.

**Point!**

Use the printer name confirmed using the "lpstat -p" command, when specifying the printer name using the option "-P".

**Use Example 1**

Printer Name : TSP143\_ \_STR\_T\_001\_  
File Name : sample1.txt  
Paper Size \* : 50.8 \* 200mm  
Margin(top) \* : 0mm  
Margin(bottom) \* : 0mm  
Margin(left) \* : 0mm  
Margin(right) \* : 0mm

\* This option is not a printer driver option, but an OS standard option.

```
$ lpr -P TSP143_ _STR_T_001_ -o media="X50D8MMY200MM"
-o page-top=0 -o page-bottom=0 -o page-left=0
-o page-right=0 sample1.txt
```

**Use Example 2**

File Name : sample2.txt  
Print Speed : Low

```
$ lpr -o PrintSpeed=2Low sample2.txt
```

**Use Example 3**

File Name : sample3.txt  
Document Cut Type : No Cut

```
$ lpr -o DocCutType=0NoCutDoc sample3.txt
```

## 5.1 Function List

See section 2.1 Function List for the details on the functions.

	Option Name		Command		Supported Model							
	option	value	[ option ]	[ value ]	TSP 143 *	TSP 113 **	TSP 654II	TSP 743II	TSP 847II	POP 10	MCP 31L/ 31LB	MCP20/ 20B/ 21LB
Output Option	Print Speed	High	PrintSpeed	0High	●	●	●	●	●	●	●	
		Middle		1Middle	○	○	○	○	○		○	
		Low		2Low	○	○	○	○	○	○	○	
	Print Density	-3	PrintDensity	0Minus3			○				○	
		-2		1Minus2			○				○	
		-1		2Minus1			○				○	
		Standard		3ZERO			●			●	●	●
		+1		4Plus1			○			○	○	○
		+2		5Plus2			○			○	○	○
		+3		6Plus3			○			○	○	○
	Page Type	Variable Length	PageType	0Variable	●	●	●	●	●	●	●	●
		Fixed Length		1Fixed	○	○	○	○	○	○	○	○
	Top Search	Disable	TopSearch	0Disable				●	●			
		Enable		1Enable				○	○			
	Top Margin	Disable	TopMargin	0Disable							●	
		2mm		1Millimeter2							○	
		3mm		2Millimeter3							○	
		4mm		3Millimeter4							○	
		5mm		4Millimeter5							○	
		6mm		5Millimeter6							○	
		7mm		6Millimeter7							○	
		8mm		7Millimeter8							○	
		9mm		8Millimeter9							○	
		10mm		9Millimeter10							○	
Cut Options (Cutter)	Page Cut Type	No Cut	PageCutType	0NoCutPage	●		●	●	●	●	●	●
		Partial Cut		1PartialCutPage	○		○	○	○	○	○	○
		Full Cut		2FullCutPage					○	○		○
	Document Cut Type	No Cut	DocCutType	0NoCutDoc	○		○	○	○	○	○	○
		Partial Cut		1PartialCutDoc	●		●	●	●	●	●	●
		Full Cut		2FullCutDoc				○	○	○		○
		Tear Bar		3TearBarDoc					○			
Feed Options (TearBar)	Page Feed Type	No Feed	PageCutType	0NoCutPage		●						
		Tear Bar		1TearBarPage		○						
	Document Feed Type	No Feed	DocCutType	0NoCutDoc		○						
		Tear Bar		1TearBarDoc		●						
Data Treatment Recover From Error	Data Treatment Recover From Error	No Use	DataTreatment RecoverFrom Error	0NoUse			○	○	○	○	○	○
		Clear Data By Document Unit		1ClearDataBy DocumentUnit			●	●	●	●	●	●

\* TSP143(Cutter Model) :TSP100IIIW/LAN/BI/U, TSP100IIU, TSP143U, TSP143GT, TSP143LAN

\*\* TSP113(Tear Bar Model) :TSP113U, TSP113GT, TSP113LAN

	Option Name		Command Name		Supported Model							
	option	value	[ option ]	[ value ]	TSP 143 *	TSP 113 **	TSP 654II	TSP 743II	TSP 847II	POP 10	MCP 31L/31LB	MCP20/20B/21LB
Cash Drawer Control	Cash Drawer	Do Not Open Drawers	CashDrawerSetting	0DoNotOpenDrawers	●	●	●	●	●	●	●	●
		Open Drawer 1		1OpenDrawer1	○	○	○	○	○	○	○	○
		Open Drawer 2		2OpenDrawer2	○	○	○	○	○	○	○	○
		Open Drawer 1 and 2		3OpenDrawer3	○	○	○	○	○	○	○	○
	Cash Drawer 1 Pulsh Width	10 milliseconds	CashDrawer1PulseWidth	0Millis10	○	○	○	○	○	○	○	○
		100 milliseconds		1Millis100	○	○	○	○	○	○	○	○
		200 milliseconds		2Millis200	●	●	●	●	●	●	●	●
		300 milliseconds		3Millis300	○	○	○	○	○	○	○	○
		400 milliseconds		4Millis400	○	○	○	○	○	○	○	○
		500 milliseconds		5Millis500	○	○	○	○	○	○	○	○
		600 milliseconds		6Millis600	○	○	○	○	○	○	○	○
		700 milliseconds		7Millis700	○	○	○	○	○	○	○	○
		800 milliseconds		8Millis800	○	○	○	○	○	○	○	○
		900 milliseconds		9Millis900	○	○	○	○	○	○	○	○
		1000 milliseconds		10Millis1000	○	○	○	○	○	○	○	○
		1100 milliseconds		11Millis1100	○	○	○	○	○	○	○	○
		1200 milliseconds		12Millis1200	○	○	○	○	○	○	○	○
Buzzer1 Control / Buzzer2 Control	Buzzer1 / Buzzer2	No Use	Buzzer1Setting /	0NoUse			●	●			●	●
		Document Top	Buzzer2Setting	1DocumentTop			○	○			○	○
		Document Bottom		2DocumentBtm			○	○			○	○
	Buzzer1 - On Time / Buzzer2 - On Time	20 milliseconds	Buzzer1OnTime /	0Millis20			●	●			●	●
		40 milliseconds	Buzzer2OnTime	1Millis40			○	○			○	○
		100 milliseconds		2Millis100			○	○			○	○
		200 milliseconds		3Millis200			○	○			○	○
		500 milliseconds		4Millis500			○	○			○	○
		1000 milliseconds		5Millis1000			○	○			○	○
		2000 milliseconds		6Millis2000			○	○			○	○
		5000 milliseconds		7Millis5000			○	○			○	○
	Buzzer1 - Off Time / Buzzer2 - Off Time	20 milliseconds	Buzzer1OffTime /	0Millis20			●	●			●	●
		40 milliseconds	Buzzer2OffTime	1Millis40			○	○			○	○
		100 milliseconds		2Millis100			○	○			○	○
		200 milliseconds		3Millis200			○	○			○	○
		500 milliseconds		4Millis500			○	○			○	○
		1000 milliseconds		5Millis1000			○	○			○	○
		2000 milliseconds		6Millis2000			○	○			○	○
		5000 milliseconds		7Millis5000			○	○			○	○
	Buzzer1 - Repeat / Buzzer2 - Repeat	1	Buzzer1Repeat /	0Repeat1			●	●			●	●
		2	Buzzer2Repeat	1Repeat2			○	○			○	○
		3		2Repeat3			○	○			○	○
		5		3Repeat5			○	○			○	○
		10		4Repeat10			○	○			○	○
		15		5Repeat15			○	○			○	○
		20		6Repeat20			○	○			○	○

\* ● is the default setting value.

## 6. Confirmed Operating Environments

macOS 10.13, macOS 10.12, Mac OS X 10.11, Mac OS X 10.10

- iMac (Late 2009)
- Mac mini (Late 2014)



## 7. Revision History

Rev. No.	Date	Content
Rev. 1.0	Jan, 2009	New release.
Rev. 2.0	Jun, 2009	Error correction.
Rev. 3.0	Mar. 2010	Added a new model "TSP800II".
Rev. 4.0	Sep. 2010	Added support for Star cups Driver 3.2.0. Added support for new models of 'Data Treatment Recover From Error Command' and 'Buzzer Command'.
Rev. 5.0	Feb. 2013	Added a new model "TSP654II". Added support for Mac OS X 10.7, Mac OS X 10.8.
Rev. 5.1	May 2013	Error correction.
Rev. 6.0	Jan. 2015	Added support for Bluetooth.
Rev. 6.1	Jun. 2016	Added new models TSP100IIIW / LAN / BI. Added support for Mac OS X 10.11
Rev. 6.2	Oct. 2016	Added support Star Cloud Services Added support for Mac OS X 10.12. Mac OS X 10.5 to 10.8 end of support.
Rev. 6.3	Mar. 2017	Added new models TSP100IIIU and mPOP.
Rev. 6.4	May 2017	Added support for Micro Receipt function of Star Cloud Services
Rev. 6.5	Jun. 2018	Added new models mC-Print3 and mC-Print2. Mac OS X 10.9 end of support.



*URL: <http://www.starmicronics.com/support/>*